



WJB AUTOMOTIVE

PRODUCT LINE

Suspension Knuckle Assembly



The Challenge



Installation for traditional Generation 1 wheel bearings and wheel hubs come with a few hurdles:

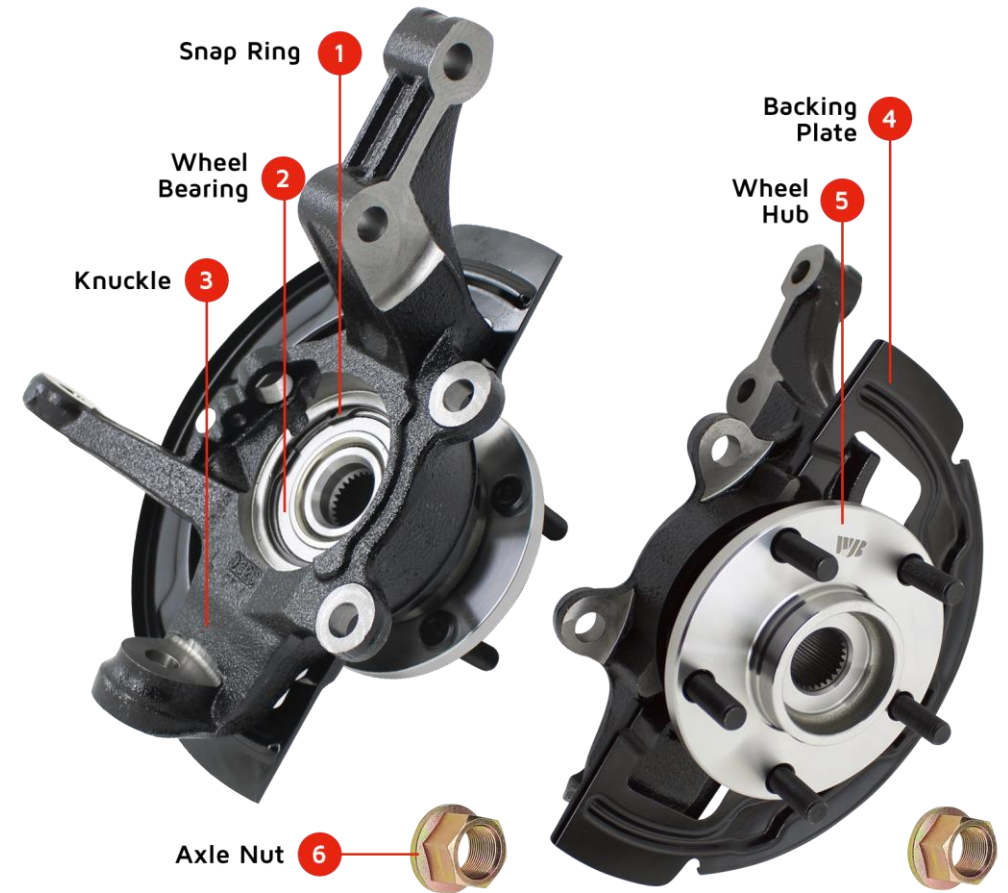
- Require multiple components that need to be compatible with one another (wheel hub, bearing, knuckle, seals, hardware, etc.)
- Require specialized shop tools such as a bearing press
- Extended installation times that can lead to additional labor hours
- Improper installation may lead to damaged parts that cannot be reused

The Solution

WJB Automotive's *Pre-pressed, Bolt-on Solution*

The wheel bearing is pre-pressed into the knuckle and the wheel hub is pre-pressed into the bearing right out of the box

- ✓ Saves repair time and cost
- ✓ Eliminates potential errors and risks
- ✓ Increases vehicle's safety and performance efficiency





Save on Time and Labor Costs

50-75% Repair Time

- ❖ Eliminates the most challenging steps of pressing the old wheel hub out of the bearing, pressing the old bearing out of the knuckle, and re-pressing all new parts together
- ❖ All-inclusive Product: all components required for complete installation are included and pre-installed
- ❖ Removes the hassle of having to source all components separately



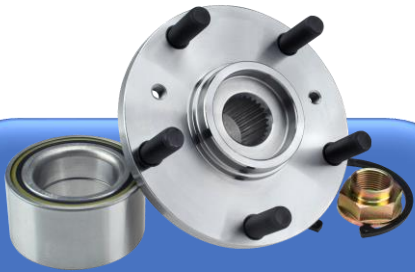
Eliminate Risks



- ❖ Bearing press procedures generally have associated risks such as improper seating
- ❖ Bearings and wheel hubs in these knuckle assemblies are machine-pressed with perfect accuracy for proper seating alignment
- ❖ Factory Coated – comes with specialized coatings that minimize the risk of rust and prolongs the part's life cycle

The Next Generation?

Suspension Knuckle Assemblies



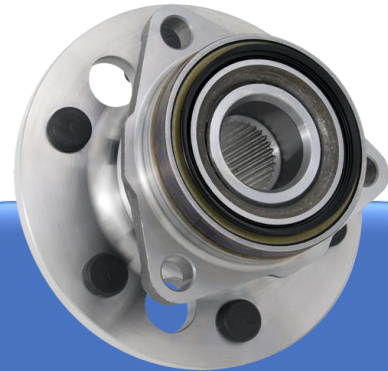
GENERATION 1

Wheel hub, bearing, oil seals, retaining clips, and other components all come separately



GENERATION 2

Combines all separate components into a single part but still requires a bearing press for installation



GENERATION 3

Introduces mounting flange and splines, removing the need for a bearing press



NEXT GENERATION?

Integrates the knuckle (and other suspensions components depending on SKU) into the entire assembly



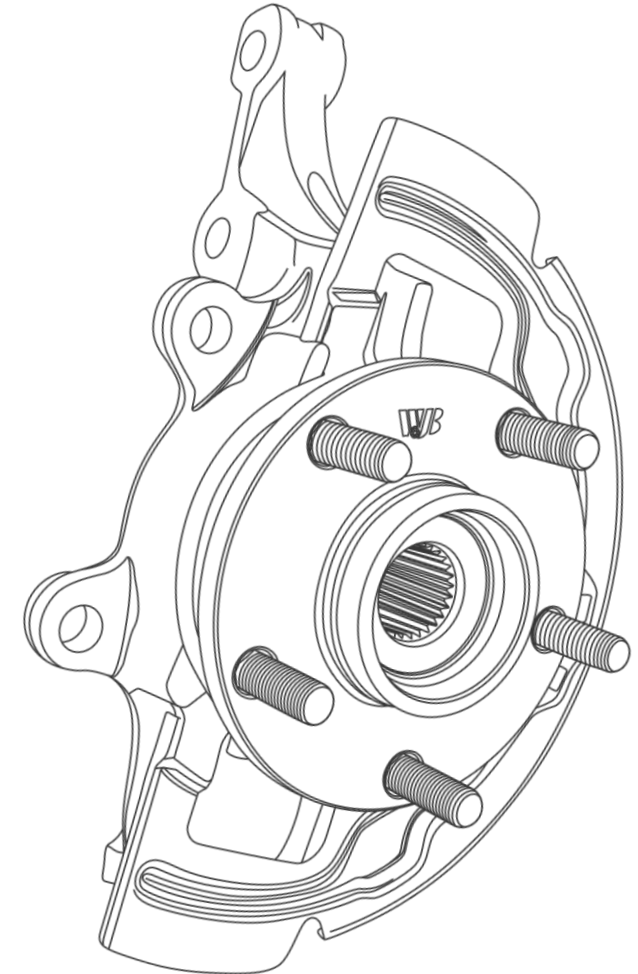
WJB AUTOMOTIVE

Applications & Coverage

WJB Automotive's suspension knuckle assembly line offers **108** unique part numbers covering over 1,000 applications and vehicles.

10 Most Popular Numbers:

| Part Number | Buyer's Guide |
|-------------|---|
| WLK002 | Ford Explorer 2005-03; Mercury Mountaineer 2005-03 |
| WLK001 | Ford Explorer 2005-03; Mercury Mountaineer 2005-03 |
| WLK410 | Dodge Caliber 2012-07; Jeep Compass 2017-07, Patriot 2017-07 |
| WLK411 | Dodge Caliber 2012-07; Jeep Compass 2017-07, Patriot 2017-07 |
| WLK003 | Ford Focus 2011-06 |
| WLK004 | Ford Focus 2011-06 |
| WLK007 | Volkswagen Beetle 2010-98, Beetle Cabrio 2010, Golf 2010 2007-99, Jetta 2005-99 |
| WLK043 | Lexus ES350 2012-07; Toyota Camry 2011-07 |
| WLK008 | Volkswagen Beetle 2010-98, Beetle Cabrio 2010, Golf 2010 2007-99, Jetta 2005-99 |
| WLK044 | Lexus ES350 2012-07; Toyota Camry 2011-07 |



**Contact us for a complete part number list and Buyer's Guide*

Thank you for listening!



WJB AUTOMOTIVE

