

# ROLL FORMED HUB ASSEMBLY



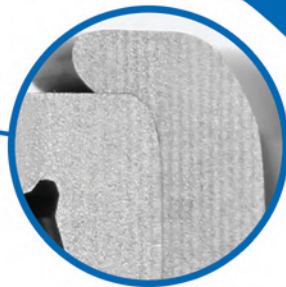
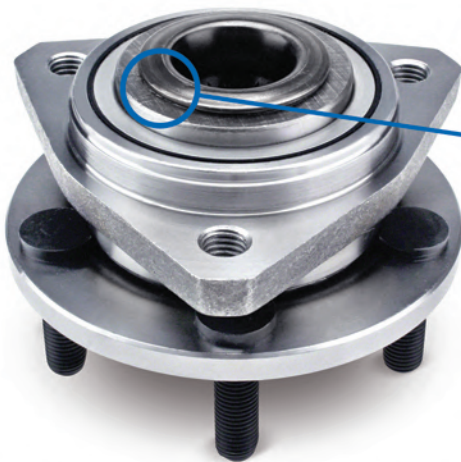
Proper preload of the bearing and race is not only critical to a hub assembly's performance and service life, but also important to ensure the safety of a vehicle. To increase the durability and performance of a hub assembly, and to prevent artificial mistake of improper torquing, Roll Forming technology was innovated. Roll Forming technology provide precise bearing preload and improved overall strength to the Hub Assembly for secure clamping to the CV joint and knuckle for optimum vehicle safety.

However, not all roll formed hub assemblies are created equal! Roll forming design can cause potential issue on cracking during roll forming process if a manufacturer can't well control their manufacturing processes.

## WJB ROLL FORMED HUB ASSEMBLIES

WJB Automotive's Roll Formed Hub Assemblies are manufactured under rigorously controlled manufacturing processes with high quality raw materials to ensure optimal strength and preload.

- Precise bearing preload and assembly tolerances
- Improves vehicle steering accuracy
- Higher dynamic and static loading
- Curling Thickness is thicker than average roll formed hub assemblies in the market
- Large slinger diameter of spindle, larger OD diameter of inner ring, smaller diameter of hub, which enhanced the stability of ball contact trail at big lateral force



No gap on the roll form of WJB's hub assemblies, which outperformed value grade aftermarket roll formed hub assemblies with visible gap.



## ROLL FORMING DESIGN

- Locked by the roll forming head
- Preload design / negative end play
- Improved overall performance over c-keeper design and standard design
- Better price than C-keeper design

## STANDARD DESIGN

- Locked by a pressed lock ring
- Non-preload design / Active end play
- Rely on installer to lock the axle nut at specific torque to ensure correct preload

WJB Headquarters: 3191 W Temple Ave STE 245, Pomona, CA 91768  
Phone: 888.WJB.9886 | Fax: 909.992.7828 | Email: sales\_auto@wjbautomotive.com



# WJB HD HUB ASSEMBLY

Reduce Your Return by What's Inside

Roll forming technology is only part of the overall enhancements WJB Automotive made to its Hub Assembly line. The company has taken its Hub Assembly line to the next level with further overall design, durability and performance improvements with the introduction of WJB HD HUB ASSEMBLIES.

## ADVANCED ROLL FORMING DESIGN

- Features preset preload that improves performance
- Increased contact area with inner seat
- Provides enhanced reliability and safety with more effective riveting intensity of roll forming to avoid potential fracture

## THE OPTIMAL ABS SENSOR DESIGN

- The sensor labyrinth seal design ensures sealing performance and reduces seal failure
- The original stencil production is fully protected with injection protection, which ensure the stability of the sensor signal
- Assures correct brake response and performance

## INCREASING THE INTERNAL STEEL BALL SIZE OR THE NUMBER OF STEEL BALLS

- Increased capacity between 20 and 30%
- Enhanced hub unit life
- Lower temperature and lighter torque

## IMPROVEMENT OF RAW MATERIAL TO 10656

- Enhanced the unit's overall strength to reach optimal safety
- Improved the heat treatment performance for longer life cycle

## OPTIMAL SEALING DESIGN

- Low torque, lighter weight and more compact
- Self-lubricating rubber for lower heat and longer life
- A wide and low temperature range of -50 °C ~ 175 °C
- Optimized dirt and contaminant exclusion

## OPTIMAL FLANGE DESIGN

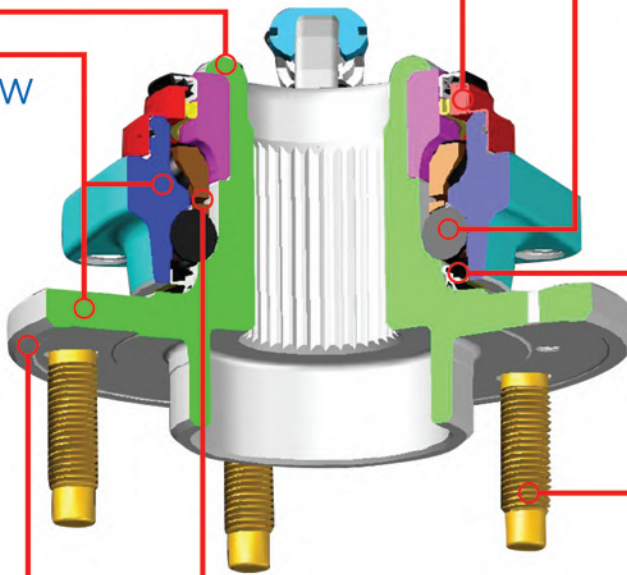
- Optimized noise and vibration level
- Improved the wheel balancing performance

## HIGHER PERFORMANCE GREASE

- Minimizing friction
- Enhanced the resistance to high temperature capacity
- Stronger resistance to fatigue and extreme pressure additives for longer life

## WHEEL STUD ENHANCEMENTS

- Improved surface coating for stronger corrosion resistance
- Coating toughness prevents bolt loosening
- Improved visual appearance



## HD HUB ASSEMBLIES LIST:

- WA513087HD
- WA513089HD
- WA513121HD
- WA513124HD
- WA513137HD
- WA513138HD
- WA513160HD
- WA513179HD
- WA513187HD
- WA513188HD
- WA513199HD
- WA513203HD
- WA515036HD
- WA515050HD
- WA515058HD
- WA515086HD
- WA515088HD

Please contact WJB Automotive for a full list of HD Hub Assemblies