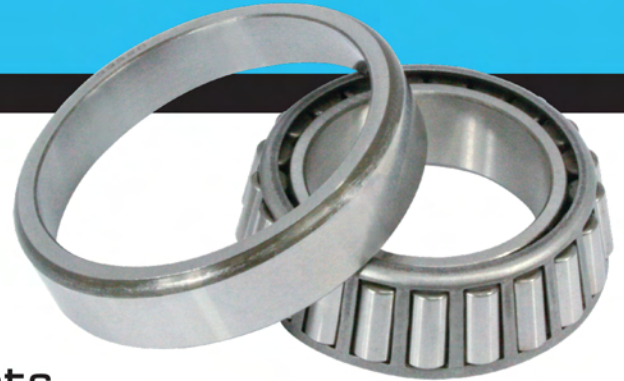




WJB HEAVY DUTY

The Professional Source for Every Bearing Need.



Wheel Bearing Sets



OIL SEALS



CLUTCH RELEASES

BCA SETS	SKF SET	SKF Old	SKF New		TIMKEN SETS
HD206	SET401	580/572	BR580	BR592	SET 401
HD211	SET402	582/572	BR852	BR572	SET 402
HD203	SET403	594A/592A	594-A	592-A	SET 403
HD204	SET404	598A/592A	598-A	592-A	SET 404
HD207	SET405	663/653	BR663	BR653	SET 405
HD205	SET406	3782/3720	BR3782	BR3720	SET 406
HD213	SET407	28682/28622	BR28682	BR28622	SET 407
HD210	SET408	39590/39520	BR39590	BR39520	SET 408
HD219	SET409	45280/45220	BR45280	BR45220	SET 409
N/A	SET410	45284/45220	BR45284	BR45220	SET 410
HD209	SET411	47686/47620	BR47686	BR47620	SET 411
HD202	SET412	HM212047/011	HM212047	HM212011	SET 412
HD200	SET413	HM212049/011	HM212049	HM212011	SET 413
HD201	SET414	HM218248/210	HM218248	HM218210	SET 414
HD208	SET415	HM518445/410	HM518445	HM518410	SET 415
N/A	SET416	45291/45220	BR45291	BR45220	SET416
N/A	SET417	47890/47820	BR47890	BR47820	SET417
N/A	SET419	H715343/H715311	H715343	H715311	SET419
N/A	SET420	H715345/311	H715345	H715311	SET 420
HD214	SET421	HM516449A/410	HM516449-A	HM516410	SET 421
HD212	SET422	HM516449C/410	HM516449-C	HM516410	SET 422
HD218	SET423	6461A/6420	6461-A	BR6420	SET 423
HD217	SET424	555S/552A	555-S	552-A	SET 424
HD216	SET425	567/563	BR567	BR563	SET 425
HD215	SET426	47679/47620	BR47679	BR47620	SET 426
N/A	SET499	687/672	BR687	BR672	N/A



WJB Automotive LLC

3191 W Temple Avenue STE 245, Pomona, CA 91768

Phone: 888.WJB.9886 | Fax: 909.992.7828 | sales_auto@wjbautomotive.com
www.wjbautomotive.com



Wheel Bearing Unit



This new generation of heavy duty wheel bearing unit contains double row tapered roller bearings. It is developed and designed to meet specific needs of commercial vehicles under various operating environments. The design improves vehicle stability and reduces the incidence rate of maintenance and bearing failure.



These double row bearing units are developed and manufactured to simplify installation and do not require adjustment. Bearing are pre-loaded and utilizes integral seals to extend bearing life and reduce failure due to water and dirt ingress. This double row design offers the greatest performance and bearing life while retaining a smaller overall size.



The advantages beyond common tapered roller bearings are:

- Pre-adjusted, pre-lubricated, pre-sealed
- Fewer and simplified components
- Strong contamination resistance
- Shorten the length of major axis in order to reduce the deformation and positioning errors
- Simplified installation and eliminated manual bearing adjustment
- No need for adjustment during maintenance
- Increased system reliability
- Long maintenance interval